

### 3. Fundamental notions of computer science

*What is "Computer Science" / "Informatics" ?*

"Computer Science" – science about a tool?

better names would be: "*science of computing*"  
or "*data processing science*"

(focuses on activity instead of tool)

"Informatics": continental-European for "computer science"

- French: "Informatique" (since 1960s)

- German: "Informatik"

Definition: "Science of the systematical processing of information, especially the automatic processing by use of digital computers".

Latin "informare":

to give structure to something; to educate; to picture

*Information:*

- independent fundamental entity of the world besides matter and energy
- depends on previous knowledge of the receiver of the information
- various approaches to quantify it
- we can consider information simply as "interpreted data".

Data: represented information

(e.g. text in a book, magnetic patterns on a harddisk, ...)

But:

Hermeneutics – "the art of interpretation" – is *not* part of informatics, despite its name. Social and cultural aspects of information are largely ignored.

"Computer": comes from "to compute"  
= "to calculate".

"*Algorithm*":

The word comes from the Persian textbook writer *Abu Ja'far Mohammed ibn Mûsâ al-Khowârizmî* (= "father of Ja'far Mohammed, son of Moses, coming from Khowârizm" – a town in Usbekistan, today called *Khiva*.)

Al-Khowârizmî lived in Bhagdad, in the "House of Wisdom"

wrote book about calculation:

"*Kitab al jabr w'al-muqabala*" (= "rules of reconstitution and reduction")

– here the word "algebra" comes from!

Modern meaning of "algorithm":

Finite set of rules which specify a sequence of operations in order to solve a certain problem, with the following properties:

1. **Termination:** An algorithm must come to an end after a finite number of steps.
2. **Definiteness:** Each step must be defined precisely.
3. **Input:** An algorithm *can* need input values (e.g. numbers).
4. **Output:** An algorithm *must* give one or more output values.
5. **Feasibility:** An algorithm must be feasible; e.g., no intermediate step must depend on the solution of some still unsolved mathematical problem.

(after Knuth 1973)

"*Programme*" (in American English: "program"):

Version of an algorithm which can be read, interpreted and carried out by a computer.

*Programming languages* were designed to write precise programmes (more precise than possible in our natural language!) suitable for computers.

Some notes concerning the history of *programming*:

Early phases of computer history: *Hardware* (= the machines) was in focus (reason for the name "computer science")

Later: *Software* (= programmes) increasingly important, increasingly expensive in comparison to hardware.

First “programmer”: Was a woman (**Lady Ada Lovelace**, daughter of the poet Lord Byron): Developed programs for Babbage’s (non-functional) “analytical engine”

An early concept for a programming notation was the “Plankalkül” (Zuse 1944), but it was not used in practice.

Programming these machines: Started with today so-called “**machine languages**” and “**assembler languages**” (both machine-specific).

Later: so-called “high-level languages”

- more abstraction
- better readability for humans
- trying to integrate traditional mathematical notations
- *platform-independent* (not specific to certain machine)

FORTRAN (1954), COBOL (1958), LISP (1960), Pascal (1971), C (1971), C++ (extension of C, 1992), Java (1995), XL (2008) ...

(later more about programming)

## 4. Subject areas of computer science

1960s/1970s: Development of specialized university curricula

**Basis: Mathematics, electrical engineering;** no interest in social or cultural conditions and consequences, or more specifically: in consequences for life at working place and leisure

Classical branches (from first recommendations for curricula in the 1960s): (a) **theoretical** informatics, (b) **technical** informatics, (c) **practical** informatics, (d) **applied** informatics

Theoretical informatics: mathematical basis: not general “theory” (which would include disciplines from the humanities and social sciences relevant to informatics), but specialized “mathematical base”. Example questions:

Which problems **can in principle be solved** by a machine?

How can **syntax and semantics** of programming languages be described?

Which kinds of **logic** can be used for automatic problem solving?

How do we measure **how complicated problems are**, for example with respect to time or memory requirements?

Which kinds of problems can be solved with which abstract models of computation?

How can be the **correctness** of a program be **proved** with mathematical exactness?

Technical informatics: focused on **hardware**. Example questions:

How can computational objects and operations be represented with **physical means**?

Which are the **basic parts** from which a computer should be built?

Which are the appropriate **architectural decisions** for a computer?

How can a processor be organized in order to execute a special kind of program especially quickly?

How is information **stored** for quick access with small cost?

Which are the technical conditions for building **networks** from separate computers?

How do we build computers which **survive some defects**?

Practical informatics: **non application specific programming**. Example questions:

Which are the standard problems occurring **in many application areas**, and how can they be solved?

Which **data structures** allow efficient solving of problems, and which algorithms are best used on these data structures?

What types of **programming languages** are best suited to different types of problems?

How must **service programs** be organized which provide the user with an easier to use view of the machine than the bare hardware would do?

How are high-level programs **translated** into a form which can be executed by the underlying hardware?

How does one design **user interfaces** for end users?

How does one organize the **development process** of large software systems? ("Software engineering")

Applied informatics: programming for **specific application fields**.  
Example questions:

How are **graphical objects** represented in the computer, and how can they be visualized?

Which **numerical methods** exist to model states and processes happening in natural environments?

How should **data base systems** be structured to support the work processes in a company?

Which techniques exist to simulate the working of the **human mind** with computers?

What consequences has the use of computers for the **quality of life**, both in general and at the working place in particular?

Informatics in the social context:

What **ethical questions** arise from the use of computers, and how can they be answered?

(data security, privacy questions, computer viruses, hackers, violence-promoting games, software piracy, ownership of software and ideas, the open-source idea, use of information technology for warfare, for crime, for sexual exploitation, for terrorism...)

How does the use of computers influence our **way of thinking** (about the world, about humans, about the mind, about personal relationships of people...)?

How can computers, the Web and the "Web 2.0" (Facebook, Twitter, Wikipedia etc.) be used to improve education / autonomy of people / human rights / political participation... ?



## 5. Representation of information

In digital computers and media, all data are represented by combinations of only 2 elementary states: 0 and 1

(can be "charged" / "not charged", "on" / "off", "magnetized" / "not magnetized", "open" / "closed", "high current" / "low current", "plus" / "minus" etc.)

The smallest amount of information is thus the *bit* (binary digit). It expresses which of two alternatives is the case. The alternatives are often written 0 and 1, or (sometimes) 0 and L.

$n$  bits: represent one out of  $2^n$  alternatives.

### *Codes*

To represent information in a computer, we must *encode* all with the two symbols 0 and 1 !

What is a *code* ?

Code (1): A mapping  $f: A \rightarrow B$  from a set  $A$  of elements to be stored or transferred to a set  $B$  used for storage or transfer.

Code (2): The set  $B$  from definition (1).

Example:

A	B	C	J	K	L	S	T	U
D	E	F	M	N	O	V	W	X
G	H	I	P	Q	R	Y	Z	

$$A = \{A, B, C, \dots, Z\}$$

$$B = \{ \_ , \sqcup , \sqcap , \dots , \sqsupset \}$$

MESSAGE  $\xrightarrow{f}$   $\_ . \sqcup \_ . \_ . \_ \sqsupset \sqcup$

**digital** (discrete) and **analogue** (continuous) codes

**Analogue** computers (representation of quantities with continuously changing quantities): have vanished

Example: Vinyl records (analogue) vs. compact disks (discrete)

Benefit of discrete data representations: avoiding **noise**

For digital computers, we need *binary* codes:  
 $B$  is a set of combinations of 0 and 1.

## Examples:

For the primary **compass direction**: two bits necessary, and some convention which bit-pair represents which direction. Example code:

$$\{N, E, S, W\} \rightarrow \{0, 1\}^2, N \mapsto 00, E \mapsto 01, S \mapsto 10, W \mapsto 11$$

For **Boolean** values 'True' and 'False':

$$\{T, F\} \rightarrow \{0, 1\}, T \mapsto 1, F \mapsto 0$$

For **numbers** 0 to 9: Binary Coded Decimal (BCD, non-total code, i.e. some combinations are unused)

$$\begin{aligned} \{0, 1, \dots, 9\} &\rightarrow \{0, 1\}^4 \\ 0 &\mapsto 0000, 1 \mapsto 0001, 2 \mapsto 0010, 3 \mapsto 0011, \\ 4 &\mapsto 0100, 5 \mapsto 0101, 6 \mapsto 0110, 7 \mapsto 0111, \\ 8 &\mapsto 1000, 9 \mapsto 1001 \end{aligned}$$

## *Multiples of bits*

Bits seldom occur as singles. Certain multiples of bits are used as *units for information (storage) capacity*.

1 Byte: 8 bits (can represent 1 of  $2^8$   
= 256 alternatives).

Example: one of the integer numbers between  
-128 and +127.

1 Halfbyte: 4 bits.

Typically, memory stores are built for *multiples of bytes*.

Prefixes: kilo, mega, giga, tera, peta, exa

- used in physics for the factors  $10^3$ ,  $10^6$ ,  $10^9$ ,  $10^{12}$ ,  $10^{15}$ ,  $10^{18}$
- in computer science often used for the factors  $2^{10}$ ,  $2^{20}$ ,  $2^{30}$ ,  $2^{40}$ ,  $2^{50}$ ,  $2^{60}$ , which are slightly larger

abbreviation	meaning	factor
KB	Kilobytes	$2^{10} = 1024$
MB	Megabytes	$2^{20} = 1,048,576$
GB	Gigabytes	$2^{30} = 1,073,741,824$
TB	Terabytes	$2^{40} = 1,099,511,627,776$
PB	Petabytes	$2^{50} = 1,125,899,906,842,624$
EB	Exabytes	$2^{60} = 1,152,921,504,606,846,976$

### *Representation of numbers in the computer*

For positive integers, basically the *binary number system* is used (cf. chapter 2).

But: Numbers are usually stored in sections of memory of fixed size (for reasons of organization of memory access in the computer).

## Integer representation in finite cells ("words" with fixed length):

Computer memory: organized in **finite cells**. Typically: Multiples of a byte.

How to store numbers in a 4-byte cell? Some encoding necessary.  $2^{32}$  different values can be represented.

Example:  $0 \dots 2^{32} - 1$  can be represented as binary numbers.

Example including negative numbers:  $-2^{31} \dots 2^{31} - 1$  can be represented as two's complements numbers.

**Two's complement:** Most used representation for integers from range  $-2^{n-1} \dots 2^{n-1} - 1$  (with  $n$ -bit cell).

Non-negative numbers: Are represented simply as binary numbers. Using  $n$  bits, the highest bit is always 0.

**Negative numbers:** (a) Represent their absolute value as binary number, (b) then invert all bits (including the infinite number of leading zeros, resulting in an infinite number of leading ones), and (c) add a 1. The last  $n$  bits are the two's complement of the value to be represented.

Example for the "Two's complement":

8-bit two's complement representation of  $-77$

1. Represent  $+77$  as a binary number:  $1001101$
2. Invert all bits, including the leading 0s:  $\dots 1110110010$
3. Add 1:  $\dots 1110110011$
4. Use only the lowest (= rightmost) 8 bits:  $10110011$

Notice:

For 16-bit cells, the result would be 1111111110110011.

decimal system	8-bit two's complement
-128	1000 0000
-127	1000 0001
-126	1000 0010
...	...
-2	1111 1110
-1	1111 1111
0	0000 0000
1	0000 0001
...	...
126	0111 1110
127	0111 1111

Properties of the two's complement:

Code represents numbers  $-2^{n-1} \dots 2^{n-1} - 1$ .

High bit represents **sign**.

Minimal value represented by 1000..., maximal by 0111....

-1 represented by 111....

## Floating-point representations

Built analogously to the "scientific representation" of numbers in the form  $m * 10^e$

- but using the binary system:

Represent numbers in the form

$$s * m * 2^e$$

with sign  $s$  (+1 or -1), non-negative mantissa  $m$ , and integer exponent  $e$ .

Representation is **normalized** if  $1 \leq m < 2$ .

Finite number of bits for sign, mantissa and exponent; often used: 32 bits (single precision), 64 bits (double precision), 80 bits (extended precision)

Typical layout of 32-bit floating point number:

Bit 31: represents  $s$  (1: negative; 0: positive)

Bits 30..23 (8 bits): represent  $e$ : Binary representation of  $e + 127$ , which allows the values  $-126 \dots 127$ . Value 0 is used in representation of number 0 and of unnormalized numbers. Value  $255_{10}$  used to represent infinity and other exceptional values.

Bits 22..0 (23 bits): represent  $m$ , by binary representation of the integer part of  $m * 2^{23}$ , without the leading 1.

Example: representing  $+26.625$  as a 32-bit normalized floating point number:  $26.625_{10} = 11010.101_2$ . Normalizing yields  $1.1010'1010_2 * 2^4$ . 32-bit floating point number ( $s=0, e=131_{10}$ ):

0'10000011'101010100000000000000000

## *Digital representation of text*

based on representation of *letters*

- depending on the alphabet: certain number of bits necessary
- for 26 letters: at least 5 bits necessary  
( $2^4 = 16 < 26$ ,  $2^5 = 32 > 26$ )
- but also encoding of digits, special signs, upper- and lower-case letters... desirable

traditional 7-bit code:

ASCII (= *American Standard Code for Information Interchange*)

ISO-646 norm

later extended to 8-bit code

examples: 00110000 = hex 30 =  $48_{10}$  = digit 0

00110001 = hex 31 =  $49_{10}$  = digit 1

...

00111010 = hex 3A =  $58_{10}$  = ':'

...

01000001 = hex 41 =  $65_{10}$  = 'A'

01000010 = hex 42 =  $66_{10}$  = 'B'

...

01100001 = hex 61 =  $97_{10}$  = 'a'

...



# ASCII Table:

Non-printable characters						Printable characters					
Dez	Okt	Hex	Char	Code	Remark	Dez	Okt	Hex	Char	Remark	
0	000	0x00	Ctrl-@	NUL	Null prompt	32	040	0x20		blank	
1	001	0x01	Ctrl-A	SOH	Start of heading	33	041	0x21	!	exclamation mark	
2	002	0x02	Ctrl-B	STX	Start of text	34	042	0x22	"	quotation mark	
3	003	0x03	Ctrl-C	ETX	End of Text	35	043	0x23	#		
4	004	0x04	Ctrl-D	EOT	End of transmission	36	044	0x24	\$	Dollar character	
5	005	0x05	Ctrl-E	ENQ	Enquiry	37	045	0x25	%		
6	006	0x06	Ctrl-F	ACK	Acknowledge	38	046	0x26	&		
7	007	0x07	Ctrl-G	BEL	Bell	39	047	0x27	'	apostroph	
8	010	0x08	Ctrl-H	BS	Backspace	40	050	0x28	(		
9	011	0x09	Ctrl-I	HT	Horizontal tab	41	051	0x29	)		
10	012	0x0A	Ctrl-J	LF	Line feed	42	052	0x2A	*	asterisk	
11	013	0x0B	Ctrl-K	VT	Vertical tab	43	053	0x2B	+	plus sign	
12	014	0x0C	Ctrl-L	FF	Form feed	44	054	0x2C	,	comma	
				NP	New page	45	055	0x2D	-	minus sign	
13	015	0x0D	Ctrl-M	CR	Carriage return	46	056	0x2E	.	dot	
14	016	0x0E	Ctrl-N	SO	Shift out	47	057	0x2F	/	slash	
15	017	0x0F	Ctrl-O	SI	Shift in	48	060	0x30	0		
16	020	0x10	Ctrl-P	DLE	Data link escape	49	061	0x31	1		
17	021	0x11	Ctrl-Q	DC1	X-ON	50	062	0x32	2		
18	022	0x12	Ctrl-R	DC2		51	063	0x33	3		
19	023	0x13	Ctrl-S	DC3	X-Off	52	064	0x34	4		
20	024	0x14	Ctrl-T	DC4		53	065	0x35	5		
21	025	0x15	Ctrl-U	NAK	No acknowledge	54	066	0x36	6		
22	026	0x16	Ctrl-V	SYN	Synchronous idle	55	067	0x37	7		
23	027	0x17	Ctrl-W	ETB	End transmission blocks	56	070	0x38	8		
24	030	0x18	Ctrl-X	CAN	Cancel	57	071	0x39	9		
25	031	0x19	Ctrl-Y	EM	End of medium	58	072	0x3A	:	colon	
26	032	0x1A	Ctrl-Z	SUB	Substitute	59	073	0x3B	;	semicolon	
27	033	0x1B	Ctrl-[	ESC	Escape	60	074	0x3C	<	less than	
28	034	0x1C	Ctrl-\	FS	File separator	61	075	0x3D	=	euquality character	
29	035	0x1D	Ctrl-]	GS	Group separator	62	076	0x3E	>	greater than	
30	036	0x1E	Ctrl-^	RS	Record separator	63	077	0x3F	?	interrogation mark	
31	027	0x1F	Ctrl-_	US	Unit separator	64	0100	0x40	@	at	
127	0177	0x7F		DEL	Delete or rubout	65	0101	0x41	A		
						66	0102	0x42	B		
						67	0103	0x43	C		
						68	0104	0x44	D		
						69	0105	0x45	E		
						70	0106	0x46	F		
						71	0107	0x47	G		
						72	0110	0x48	H		
						73	0111	0x49	I		
						74	0112	0x4A	J		
						75	0113	0x4B	K		
						76	0114	0x4C	L		
						77	0115	0x4D	M		
						78	0116	0x4E	N		

79	0117	0x4F	O	
80	0120	0x50	P	
81	0121	0x51	Q	
82	0122	0x52	R	
83	0123	0x53	S	
84	0124	0x54	T	
85	0125	0x55	U	
86	0126	0x56	V	
87	0127	0x57	W	
88	0130	0x58	X	
89	0131	0x59	Y	
90	0132	0x5A	Z	
91	0133	0x5B	[	
92	0134	0x5C	\	backslash
93	0135	0x5D	]	
94	0136	0x5E	^	caret
95	0137	0x5F	_	low line
96	0140	0x60	`	back quote
97	0141	0x61	a	
98	0142	0x62	b	
99	0143	0x63	c	
100	0144	0x64	d	
101	0145	0x65	e	
102	0146	0x66	f	
103	0147	0x67	g	
104	0150	0x68	h	
105	0151	0x69	i	
106	0152	0x6A	j	
107	0153	0x6B	k	
108	0154	0x6C	l	
109	0155	0x6D	m	
110	0156	0x6E	n	
111	0157	0x6F	o	
112	0160	0x70	p	
113	0161	0x71	q	
114	0162	0x72	r	
115	0163	0x73	s	
116	0164	0x74	t	
117	0165	0x75	u	
118	0166	0x76	v	
119	0167	0x77	w	
120	0170	0x78	x	
121	0171	0x79	y	
122	0172	0x7A	z	
123	0173	0x7B	{	
124	0174	0x7C		
125	0175	0x7D	}	
126	0176	0x7E	~	

ASCII not sufficient for alphabets of the non-Anglo-american world (not even for European alphabets with ä, ö, ü, ß, é, ø, ñ, å...)

*Unicode:*

2 byte (= 16 bit) code for multilingual text processing  
- can represent 65536 characters

amongst them: 27786 Chinese-Japanese-Korean characters

11172 Hangul characters (Korean)

ancient Nordic runes

Tibetan characters

Cherokee characters ...

complete list see <http://www.unicode.org/charts/>

Unicode "Escape sequence" (to utilise it in the programming language Java):

e.g., `\u0041` = 'A' (0041 = hexadecimal representation)

Some characters occur more frequently in texts than others:

better use *variable-length* code

UTF-8: Universal Transformation Format

Characters encoded with variable number of bytes

⇒ for texts with many ASCII characters (like on many web pages) shorter as Unicode

*Strings* (or *words*): sequences of characters

encoded by sequences of the corresponding code words

## *Digital representation of pictures*

*Gray levels:* encode each gray level by a number from a fixed interval (e.g. 0, 1, ..., 255: 8-bit representation – 0 = black, 255 = white)

### *Colours:*

several colour models possible

the most frequently used one:

#### *RGB model*

(red / green / blue: primary colours for additive colour composition)

Each colour from a certain range ("gamut") can be mixed from these primary colours

examples with 8-bit intensities:

black	(0, 0, 0)
white	(255, 255, 255)
medium gray	(127, 127, 127)
red	(255, 0, 0)
green	(0, 255, 0)
blue	(0, 0, 255)
light blue	(127, 127, 255)
yellow	(255, 255, 0)

### *Pictures:*

typically represented as raster images – rectangular array (matrix) of *pixels*, each pixel represented by its 3 colour values.

## *Representation of text documents (book pages, web pages...)*

Level of representation is important.

- (1) Is there text on the page? – One bit.
- (2) What is the text on the page? –  
Representation of letter sequence (e.g., string of ASCII characters).
- (3) What is the exact layout of the text on the page? –  
"formatted text"
  - use special characters for formatting, or
  - represent the page by a rasterized black-and-white image.

Text documents with graphical elements:

- represent all as a single raster image, or
- use combined representation: several data files, one for the text, the other for the pictorial parts  
→ HTML web pages are built like this

file <name>.html or <name>.htm contains text,  
layout information and links to other pages  
files <name>.gif or <name>.jpg or <name>.png  
contain images

## 6. Databases and Geographical Information Systems (GIS)

### *Databases*

Motivation:

Computers are often used

- for dealing with **large amounts of data**
- and in situations where **data integrity** is important for the survival of an organization.

Examples:

- Banking
- e-commerce (commercial transactions via WWW – e.g., **amazon.com** or **ebay.com**)
- meteorological measurements
- booking systems (trains, airlines...)
- telecommunication (phone numbers, fax numbers, mobile phone data...)

Main problems:

- How can large amounts of data be organized so that they can be accessed quickly?
- How can data be organized so that hardware and software failures do not lead to a disaster?
- How can data be changed by several agents in parallel without interference?

Today these problems are being dealt with on the conceptual basis of **relational database management systems** (RDBMS), typically using some dialect of **SQL** (structured query language) as notation for definition and manipulation of data.

In these slides: Only very basic concepts are discussed.

## Introduction using an example

Simplistic example: public library. Data organized in **tables**.

- table “Users” with columns `UserID`, `Name`, `Address`, `BirthDate`
- table “Books” with columns `BookID`, `Title`, `Author`, `Keywords`
- table “BorrowedBooks” with columns `UserID`, `BookID`, `BorrowedSince`, `BorrowedUntil`

## Principles of database tables

- Relational databases hold the data in (typically several) **tables**.
- Each row represents one **record**.
- The number and meanings of the **columns** of a table is (more or less) **fixed**.
- The number of **rows** of a table is **variable**.

### *"Entity relationship model":*

- Each table describes one kind of **entities** or a **relation** (typically between several entities)
- a model of a certain part of reality based on the concepts of entities and their relationships is called an entity-relationship model.

In our example:  
tables "Books", "Users" represent entities,  
table "BorrowedBooks" represents a relation between these entities.



## Attributes, key candidates and keys

Columns in a table are called **attributes**. Some attributes or attribute combinations **characterize** entities. Such attributes or attribute combinations are **key candidates**. One of the key candidates is designated as **primary key**. The primary key of an entity is used in order to refer to it from other entities or from relations.

In our example, `UserID` is used as primary key in the “Users” table, and `BookID` is used as primary key in the “Books” table. These attributes are used in “BorrowedBooks” in order to refer to the related entities.

## *Data definition and data manipulation with SQL*

Two kinds of languages for working with relational data bases are distinguished:

data definition language (DDL)

data manipulation language (DML)

DDL and DML are today typically combined in dialects of SQL (structured query language) and supported by producers of database management systems. The different dialects are based on similar principles. We will give examples.

**Data definition** consists in the definition of the structure of tables and their interrelations.

During data definition, it must be defined for each table:

- which **attributes** it contains,
- how each attribute is to be **represented** (a data type must be chosen),
- which attributes form the **primary key** of the table, and
- which attributes refer as **keys** to other tables.

A notation which allows to define tables in this way is called a **data definition language** (DDL).

**Data manipulation** consists in adding, changing and deleting table rows and in the selection of data from the data base.

A DDL only allows to describe the structure of a data base, not to change its content in any way.

A notation which allows to manipulate tables is called a **data manipulation language** (DML).

## Data definition

The “Users” table from the public library example could be defined like this:

```
CREATE TABLE Users (  
  UserID      INT(10) NOT NULL,  
  Name        CHAR(100),  
  Address     CHAR(100),  
  Birthdate   DATE,  
  PRIMARY KEY (UserID)  
)
```

This instruction creates a table names “Users” with the four already described columns. `UserID` is represented a ten-digit decimal number, `Name` and `Address` are represented as 100 characters, `Birthdate` as a date, and `UserID` is the primary key of the table.

For `UserID`, a value must be given for each row in the table – for the other three columns, a standard value (`NULL`) might be used in order to designate that the value of the attribute is not known.

The table “Books” might be defined similarly, only the attribute `Keywords` presents problems. Which amount of memory should we reserve for the keywords of a book if we do not want to restrict the number of keywords beforehand?

One solution consists in the definition of an extra table “Keywords”:

```
CREATE TABLE Keywords (  
  BookID  INT(10),  
  Keyword CHAR(100)  
)
```

Key words have a maximal length of 100 characters, but the number of key words which can be given for a book is not restricted, since the same book can occur any number of times in the table.

The “Books” table could be declared like this:

```
CREATE TABLE Books (  
    BookID INT(10) NOT NULL,  
    Title CHAR(100),  
    Author CHAR(100),  
    PRIMARY KEY (BookID)  
)
```

The table representing currently borrowed books might be declared like this:

```
CREATE TABLE BorrowedBooks (  
    UserID INT(10),  
    BookID INT(10),  
    BorrowedSince DATE,  
    BorrowedUntil DATE  
)
```

## *Data manipulation*

The following operations can be used to manipulate the data in the tables:

- The **SELECT** command selects information from the data base.
- The **INSERT** command inserts rows into a table.
- The **UPDATE** command changes the content of existing rows in a table.
- The **DELETE** command removes rows from a table.

## SELECT

The list of overdue books can be determined as follows:

```
SELECT b.BookID, b.Author, b.Title, l.BorrowedSince
FROM Books AS b, BorrowedBooks AS l
WHERE      b.BookID = l.BookID
          AND l.BorrowedUntil < TODAY
```

This statement is also called a **query** (the data base system is queried for some data).

This query returns a **table with four columns**. Each row represents an overdue book; the first column contains the book id, the second the author, the third the book title, and the last column the date when the book was borrowed.

A query has the following form:

- After the keyword **FROM**, the tables are listed from which data is to be collected. We use all combinations of rows from “Books” and “BorrowedBooks”, and we abbreviate “Books” as “b” and “BorrowedBooks” as “l” elsewhere in the query.
- The **WHERE** keyword defines a filter: only those combination of rows from the **FROM** clause are kept which fulfill the condition given behind the **WHERE**: The book ids of the two entries must match, and the date until which the book must be given back must lie in the past.
- The **SELECT** keyword introduces a list of expressions which are evaluated for each row combination filtered out by the **WHERE**. In the example, these are simply some of the attributes.

## INSERT

When a book is borrowed, a row has to be added to table `BorrowedBooks`. The following instruction adds a row with `UserID 1053465`, `43565` as `BookID`, `TODAY` as `BorrowedSince` and `TODAY+14` as `BorrowedUntil`. The order of the arguments is the same as the order of the columns in the table declaration.

```
INSERT INTO BorrowedBooks
VALUES (1053465, 43565, TODAY, TODAY+14)
```

The general form is the following: After the keywords `INSERT INTO` and the name of the table, the keyword `VALUES` starts a list of values representing the row to be inserted.

## UPDATE

In order to lengthen the borrowing time of the book with id `43565` by a week, the following command could be executed:

```
UPDATE BorrowedBooks
SET BorrowedUntil = BorrowedUntil + 7
WHERE BookID = 43565
```

After `UPDATE`, the name of the table to be changed is given. The `WHERE` predicate defines which rows are affected by the change, and after `SET` it is defined which columns in the rows to be changed are updated, and to which value.

## DELETE

When a book is brought back by a user, its entry has to be taken out of the “BorrowedBooks” table:

```
DELETE FROM BorrowedBooks
WHERE BookID = 43565
```

### *Further elements of the SQL language*

Above we have only seen the most elementary SQL language elements. Many SQL dialects present many more features.

Examples:

- **Integrity constraints** can be used in order to define *conditions on the content* of a database which shall never be violated during manipulations.
- **Foreign key relations** are used in order to make explicit that values in a column are keys of some other table. They are a special case of integrity constraints.
- **Index declarations** are used in order to accelerate searching in tables.
- **Stored procedures** are used in order to store instructions which are to be executed by the database.
- Further **table operations**: *set union, set difference, set intersection, grouping of results, sorting of results.*
- **Views** allow to shield the users of a database from the internal representation of the data.



- **Database administration** consists in deciding how tables etc. are represented and which users get which kind of access to the database.
- **Invariants** and **triggers** are language elements which ensure the fulfillment of integrity constraints independently of the application programme.
- **Transactions** are language elements which ensure that a sequence of changes is either executed *completely* or *not at all*, even in the case of hardware or software failures.

### *Conceptual database design*

The **conceptual design** of a relational database often proceeds according to the following steps:

- First the **entities** relevant in the application area are collected and their types are determined. (Example: books, users)
- Then the relevant **relationships** between entities are determined. (Example: BorrowedBooks)
- For each entity type and each relationship type, the **attributes** and their data types are determined.
- Finally, **integrity conditions** for the database are specified. (Example: BorrowedUntil must not be earlier than Borrowed-Since)

On the basis of this design it is decided how entities, relationships, attributes are represented in a specific database management system.



## *Normalization:*

Redundant data in a data base might lead to **inefficiencies** and **inconsistencies**: Updates of redundantly held information have to be performed at several locations instead of at only one, and if this is forgotten, an inconsistency results.

**Normalisation** of a database consists in the reduction of redundancies, typically via splitting tables.

## *Architecture of database applications*

Database applications often use a *three-layer* architecture:

- A **DBMS** operates as the kernel of the system. It ensures data persistency, data integrity etc.
- An **application layer** provides application-specific functionality. In our example, it would provide the functions “borrow a book”, “lengthen borrowing time”, “register new user” etc.
- A **presentation layer** defines the user interface, which today is often graphical, and not seldom with an alternative using the WWW.

These three components might run as **three different programs** on different computers: A **web-browser** runs the presentation layer, the web-server dispatches the user input to an **application program**, and the application program accesses a **relational database** on a dedicated database server.

## Geographical Information Systems

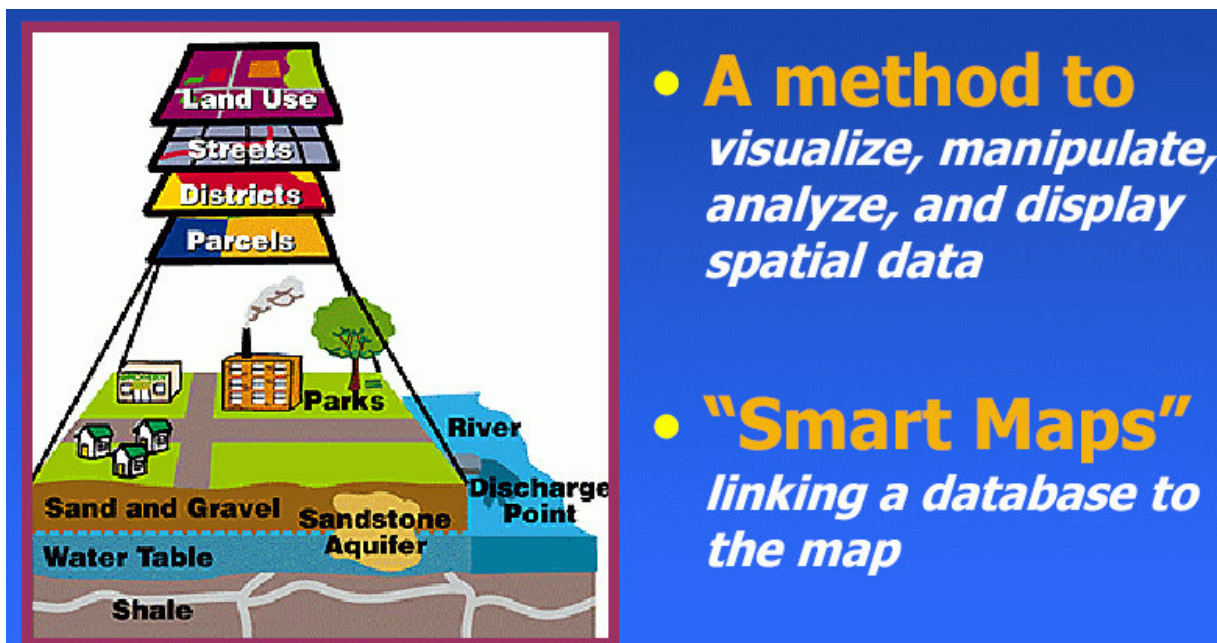
What is a Geographical Information System (GIS)?

- Software, hardware and data to help manipulate, analyse and present information that is tied to *spatial locations* (usually geographical locations).

Estimates are that 80 % of all data stored worldwide has a *spatial* component (Source: [www.gis.com](http://www.gis.com)).

A GIS contains a classical database, but extends its functionality by methods adapted to spatial information.

Particularly, a GIS provides...



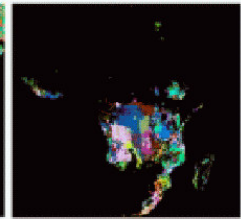
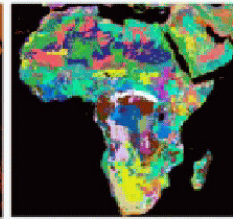
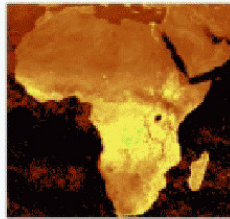
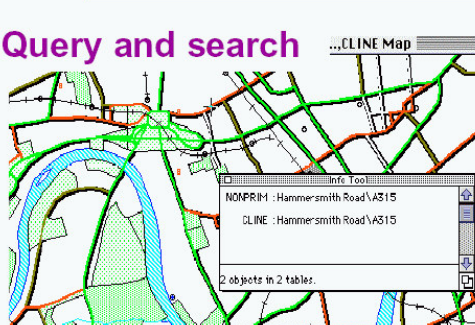
- **A method to visualize, manipulate, analyze, and display spatial data**
- **"Smart Maps" linking a database to the map**

- special forms of *query*, designed to extract information with spatial properties from a database (e.g., taking neighbourhoods into account)

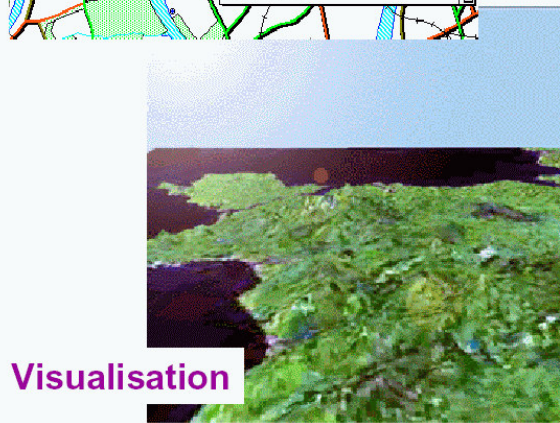
- special forms of *data analysis* (e.g., geostatistics)
- special forms of *integrity checking* adapted to spatial data.

## What can a GIS do?

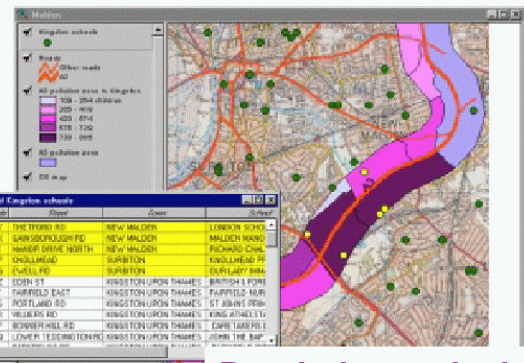
### Query and search



### Overlay analysis



### Visualisation



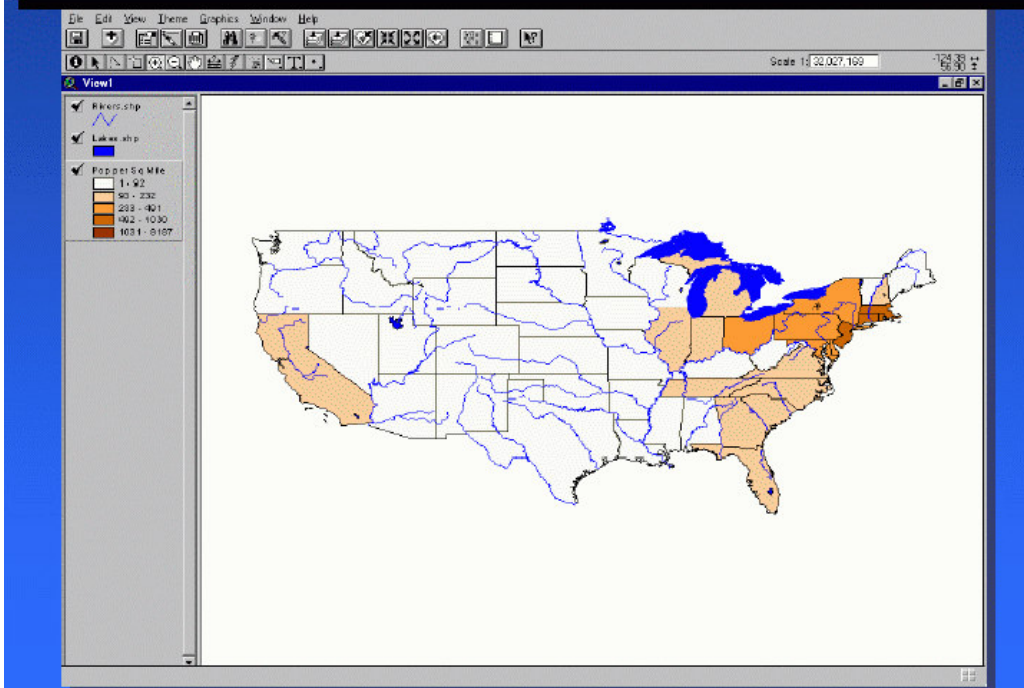
### Proximity analysis

## Database "Not Easy to Interpret"

State	State name	Area (km²)	Population	Density (per km²)	Area (mi²)	Population	Density (per mi²)
Alaska	Alaska	1,717,854	626,932	0.36	663,273	257,704	0.39
Alabama	Alabama	132,774	4,601,886	34.67	51,264	1,931,207	37.48
Arizona	Arizona	293,379	6,392,982	21.80	113,274	2,642,071	23.32
Arkansas	Arkansas	137,732	3,011,268	21.87	53,177	1,238,914	23.30
California	California	423,967	37,751,261	89.04	165,234	15,343,744	90.38
Colorado	Colorado	380,131	5,029,193	13.23	146,962	2,077,000	14.13
Connecticut	Connecticut	35,762	3,604,946	100.80	13,808	1,469,698	106.46
Delaware	Delaware	15,119	923,854	61.10	5,837	356,725	61.13
District of Columbia	District of Columbia	1,328	689,741	519.31	513	284,316	554.23
Florida	Florida	170,852	20,984,228	122.76	66,317	8,114,441	122.50
Georgia	Georgia	153,610	9,899,273	64.44	59,309	3,824,111	64.47
Hawaii	Hawaii	28,311	1,211,537	42.79	10,931	469,671	42.94
Idaho	Idaho	141,646	1,609,277	11.36	54,705	622,986	11.38
Illinois	Illinois	149,995	12,812,508	85.41	58,106	4,948,490	85.33
Indiana	Indiana	93,723	6,487,841	69.23	36,362	2,666,413	73.35
Iowa	Iowa	145,747	3,190,369	21.88	56,466	1,242,562	21.99
Kansas	Kansas	181,835	3,651,381	20.10	70,207	1,422,652	20.13
Kentucky	Kentucky	104,390	4,046,319	38.77	40,282	1,562,808	38.87
Louisiana	Louisiana	135,657	4,603,587	33.93	52,377	1,778,000	33.97
Maine	Maine	93,328	1,329,112	14.23	36,014	512,667	14.23
Maryland	Maryland	31,805	5,773,558	181.52	12,280	2,244,174	182.61
Massachusetts	Massachusetts	25,337	6,792,914	268.16	9,781	2,625,773	268.54
Michigan	Michigan	242,262	10,511,767	43.40	93,539	4,062,604	43.37
Minnesota	Minnesota	225,180	5,300,125	23.53	87,117	2,045,000	23.59
Mississippi	Mississippi	125,430	2,967,297	23.65	48,411	1,150,000	23.76
Missouri	Missouri	167,814	5,993,674	35.72	64,812	2,313,000	35.76
Montana	Montana	380,801	1,043,372	2.74	147,011	404,600	2.75
Nebraska	Nebraska	200,331	1,932,700	9.65	77,349	748,000	9.67
Nevada	Nevada	284,061	2,998,321	10.56	109,674	1,194,000	10.88
New Hampshire	New Hampshire	93,328	1,329,112	14.23	36,014	512,667	14.23
New Jersey	New Jersey	22,729	9,198,900	404.78	8,754	3,548,000	404.78
New Mexico	New Mexico	331,473	2,069,264	6.24	128,000	804,000	6.24
New York	New York	141,297	19,454,878	137.70	54,734	7,511,000	137.20
North Carolina	North Carolina	135,920	10,417,764	76.64	52,479	4,048,000	76.77
North Dakota	North Dakota	183,103	762,050	4.16	70,853	306,000	4.31
Ohio	Ohio	223,940	11,536,514	51.56	86,463	4,478,000	51.62
Oklahoma	Oklahoma	181,037	3,959,348	21.87	70,091	1,533,000	21.88
Oregon	Oregon	254,798	3,839,273	15.07	98,341	1,478,000	15.13
Pennsylvania	Pennsylvania	119,882	12,465,397	104.00	46,267	4,878,000	105.43
Rhode Island	Rhode Island	3,144	1,058,367	336.66	1,214	408,000	336.66
South Carolina	South Carolina	82,933	4,468,932	53.90	32,021	1,748,000	54.59
South Dakota	South Dakota	190,747	814,180	4.27	73,647	324,000	4.38
Tennessee	Tennessee	133,322	6,154,242	46.16	51,458	2,448,000	47.48
Texas	Texas	695,621	28,119,921	40.43	268,969	10,948,000	40.71
Utah	Utah	219,812	3,110,787	14.15	85,271	1,218,000	14.16
Vermont	Vermont	24,440	623,989	25.53	9,435	238,000	25.34
Virginia	Virginia	111,783	8,001,085	71.67	43,141	3,118,000	72.29
Washington	Washington	175,040	7,142,173	40.78	67,581	2,808,000	41.56
West Virginia	West Virginia	62,756	1,852,994	29.51	24,214	718,000	29.65
Wisconsin	Wisconsin	145,586	5,864,882	40.29	56,214	2,288,000	40.34
Wyoming	Wyoming	253,147	562,568	2.22	97,907	218,000	2.23

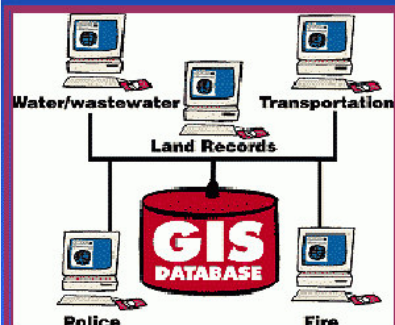


# Visualization "Worth a Thousand Words"

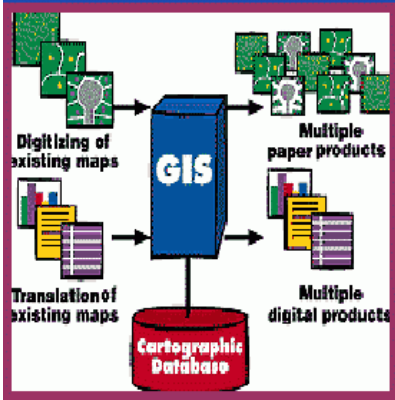


One of the main advantages of GIS over classical geographical maps:

## Combining Data From Many Sources



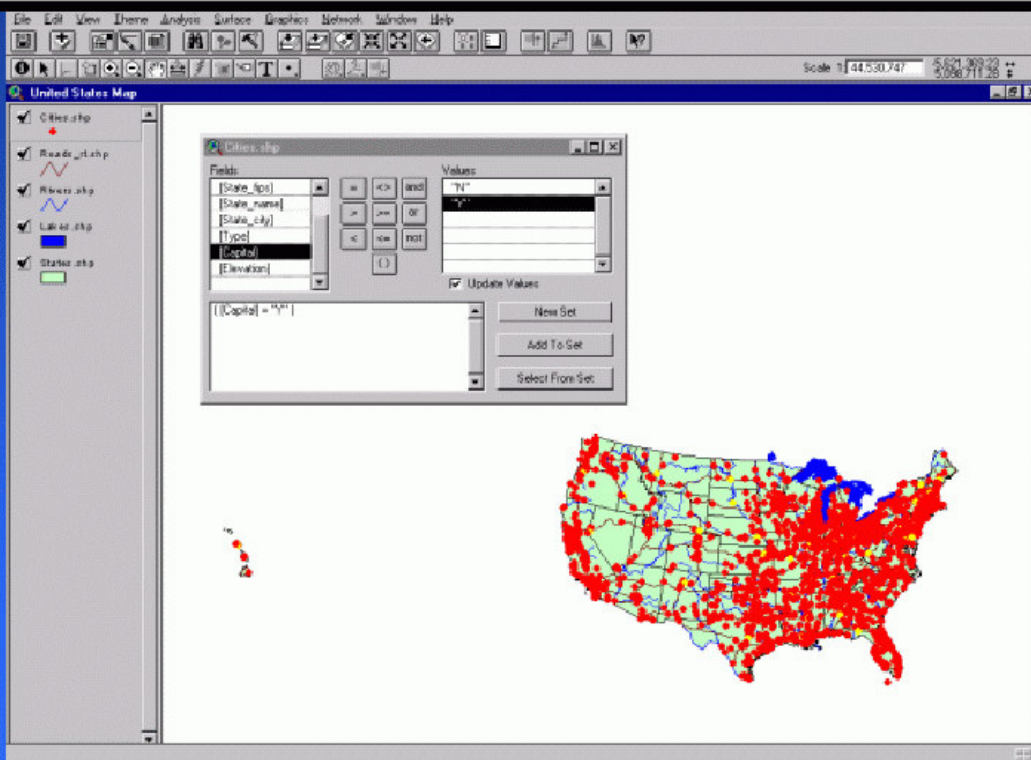
# Data For GIS Applications



- **Digitized and Scanned Maps**
  - purchased, donated, free (Internet)
  - created by user
- **Data Bases** – Tables of data
- **GPS** – Global Positioning System
  - accurate locations
- **Field Sampling of Attributes**
- **Remote Sensing & Aerial Photography**

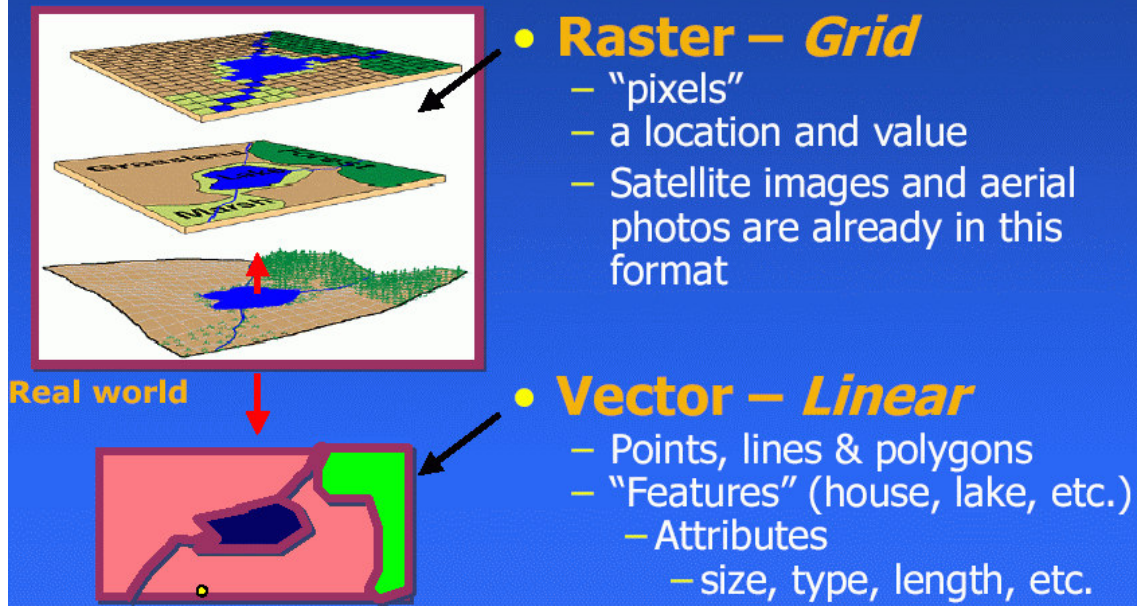
Further advantage: Easy interaction, visualization, manipulation of maps

## Asking A Question – Interaction





## Two Ways to Input and Visualize Data The World in GIS



The vector representation is more appropriate for senseful queries (and is more exact)  
– basis for relational database representation of geographical data

Typical *entities* of a GIS:

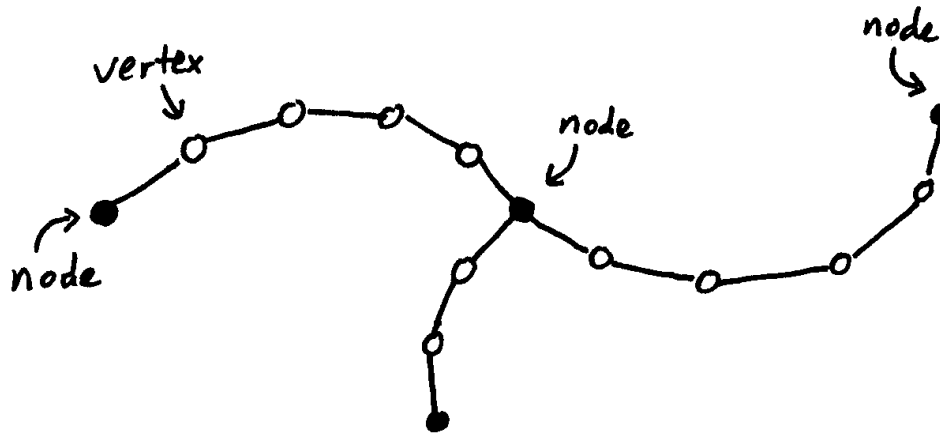
- *Points*
- *Tics* (= special points for which the exact real-world coordinates are known, used to fit a digital map into a global coordinate system)
- *Lines*, also called *arcs* (more precisely: Multilines, i.e. consisting of several linear segments)



- *Polygons* (closed multilines, possibly with additional attributes)
- *Annotations* (text objects associated with points).

The endpoints of a line (and possible branching points) are called *nodes*.

Intermediate points (without branching) are called *vertices*.



Tables in the underlying relational database:

- Tic table
- boundary table (represents the spatial extent of the map – a surrounding rectangle)
- arc attribute table (AAT)
- polygon attribute table (PAT).

E.g., a *polygon* is represented as a line in the PAT, with attributes:

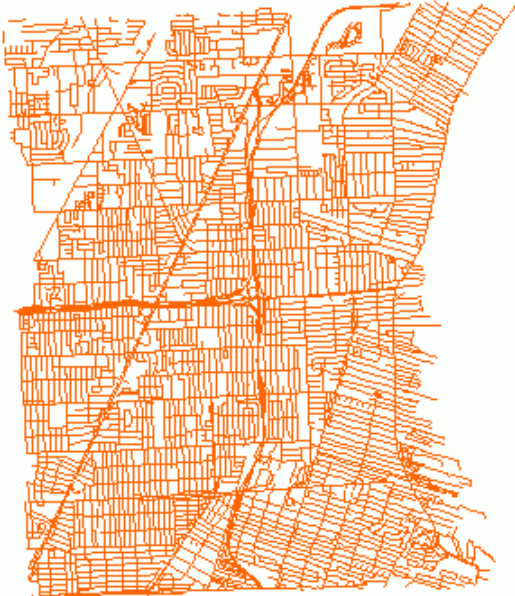

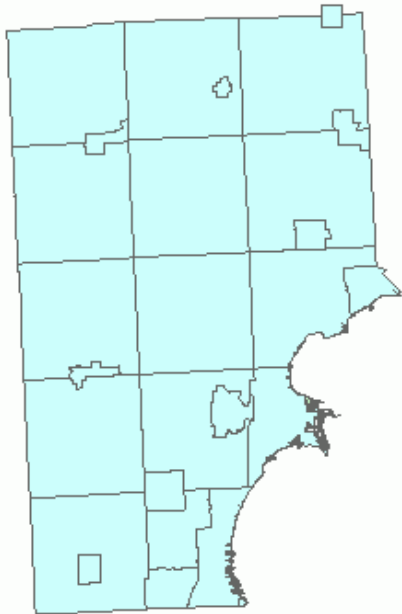
polygon ID, nodes, arcs, a label point (in the interior), further attributes (e.g., area, slope, population density...).

Details differ between different GIS.

Usually, a GIS does not only contain information for a single map of a region, but *several sorts of information for the same region*:

each sort of information is represented in an extra *coverage* (also called *layer*, *cover* or *theme*).

# Example: Different coverages of a town area

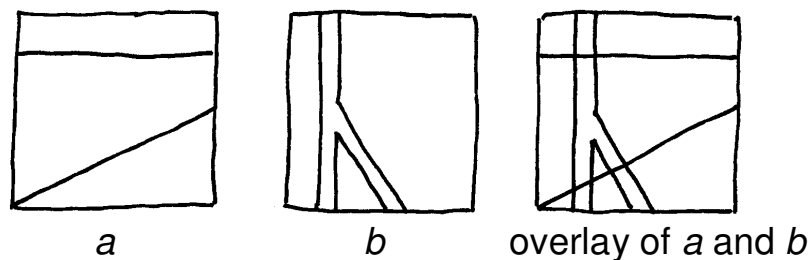
<p><b>Road Centerline/Address (Geographic Township)</b> - source: 2000 Digital Orthophotography</p> <ul style="list-style-type: none"><li>• Road Arcs</li><li>• Address Ranges</li><li>• Road Names</li></ul> 	<p><b>Hydrology (Geographic Township)</b> - source: 2000 Digital Orthophotography</p> <ul style="list-style-type: none"><li>• Water feature arcs (rivers, streams, drains)</li><li>• Water feature polygons (lakes, ponds, retention basins)</li><li>• Names of County maintained drains</li></ul> 
<p><b>Municipal Boundaries (County)</b> - source: 2000 Digital Orthophotography</p> <ul style="list-style-type: none"><li>• Community polygons</li><li>• Community name</li></ul> 	<p>(source: <a href="http://macombcountymi.gov/gis/gis_coverage_samples.htm">http://macombcountymi.gov/gis/gis_coverage_samples.htm</a>)</p>



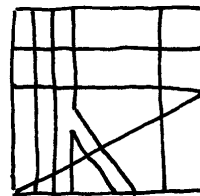
How to combine several coverages?

- *Overlay operation*

From two geometries, the GIS calculates the coarsest common geometry:



Attention: The following geometry



would also

be a common geometry of *a* and *b*, but not the coarsest one!

Using overlay, a GIS can give answer to questions like this:

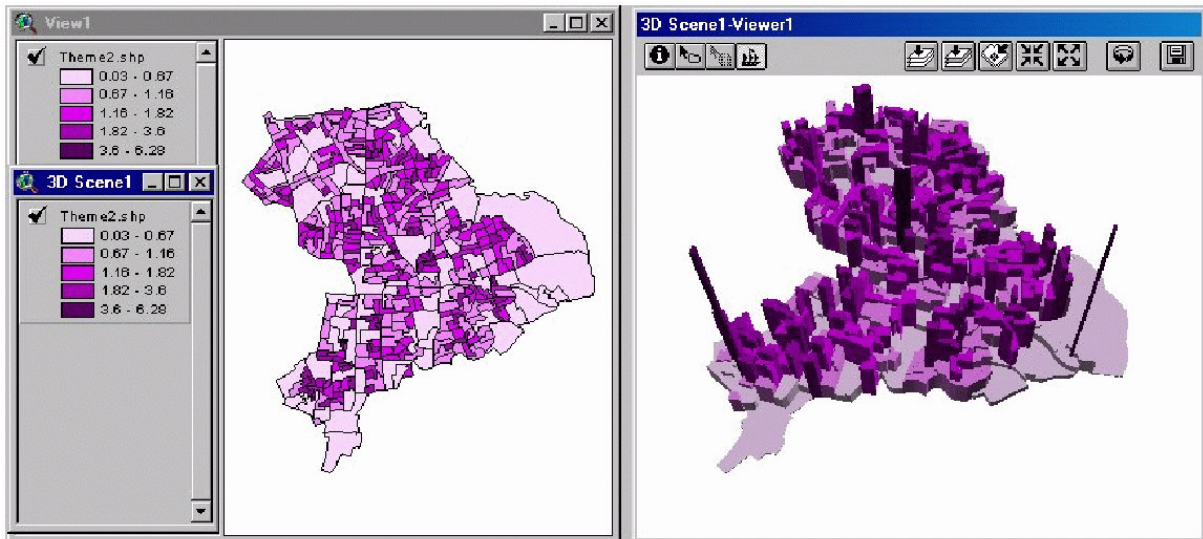
"What forest areas of district *x* are within 100 m distance to a road, are stocked with conifers and have a slope < 5 degrees?" (e.g., for a chalking action)

Layers used for this task:

- landuse map (→ forests)
- political district map (→ district *x*)
- road map (→ 100 m neighbourhood to a road)
- forest type map (→ stocked with conifers)
- digital elevation model (→ slope < 5 degrees)

Selection of polygons of the overlay using an "and" operation

## Further functionality of GIS: 3D visualization



*Representing Attribute Data in 3-D: Population Density in Small Census Areas in the London Borough of Hackney*

### Widely used GIS products:

- ESRI ArcGIS (licenced commercial software)
- QuantumGIS (free and open source, <http://www.qgis.org>)